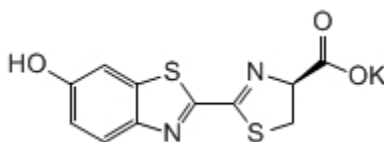


## WHAT IS THE DIFFERENCE BETWEEN FIREFLY AND BEETLE LUCIFERIN?

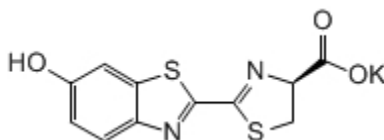
### Introduction

We are frequently asked by scientists the species from which our Luciferin is derived. In general there are two kinds of Luciferin that are sold and they are referred to as Synthetic Firefly Luciferin or Synthetic Beetle Luciferin. These molecules are identical and we believe that the primary reason for the apparent distinction is simply for marketing purposes.

The structures of these molecules, derived from the manufacturer's literature, are shown below:



Molecular structure of Firefly Potassium Luciferin. (For the Sodium salt of Luciferin, substitute Na for K.)



Molecular structure of Beetle Potassium Luciferin. (For the Sodium salt of Luciferin, substitute Na for K.)

For more product information about Luciferin, including our GoldBio *in vivo* and *in vitro* handbooks, visit Gold Biotechnology's [Potassium Luciferin](#) or [Sodium Luciferin](#).